



**WARDS
SEA KING**

**OUTBOARD
MOTOR**

PARTS CATALOG

MW-32

20

O.B.C. CERTIFIED BRAKE H.P. AT 5,000 R.P.M.

**MODEL
VWB-20920A
VWB-27020A**

Printed in U.S.A.

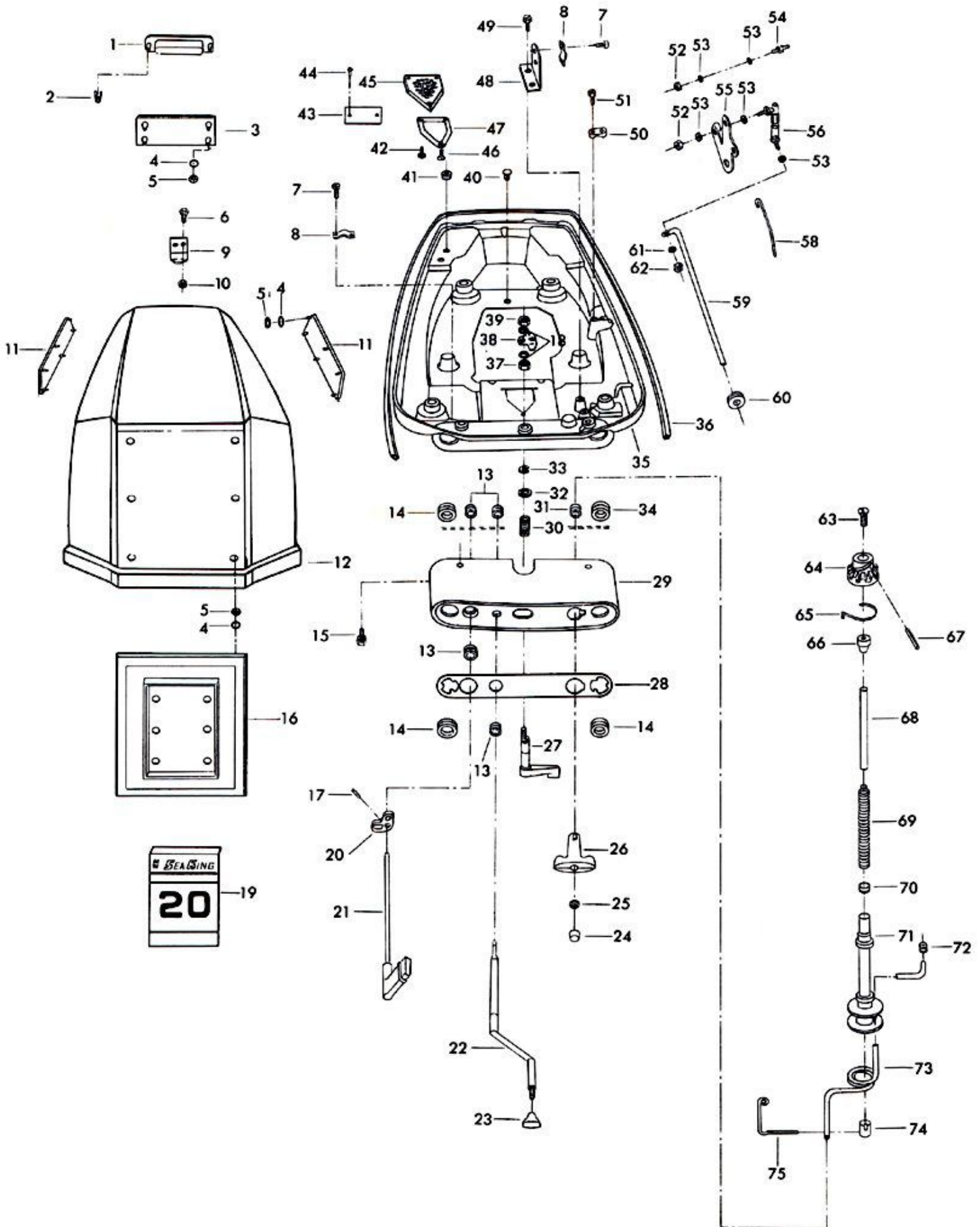
10/69

SEA KING—SOLD EXCLUSIVELY BY ***MONTGOMERY WARD***

Engine Cover, Support Plate and Starter

ILLUS. NO.	PART NO.	QTY.	DESCRIPTION	ILLUS. NO.	PART NO.	QTY.	DESCRIPTION
1	401269	1	Tilt handle	37	1518	1	Hex jam nut, 5/16 - 18
2	9037	10	Fastener	38	89777-1	1	Latch cam
3	401180	1	Trim rear	39	1518	1	Hex jam nut, 5/16 - 18
4	85735	26	Seal medallion	40	1632	1	Plasti-plug
5	1753	26	Fastener	41	75991	2	Grommet, shear pin
6	1475	2	Fill hd screw, S.S., 10 - 24 x 1/2	42	1733	2	Pan hd screw, 10 - 24 x 9/16
7	1083	4	Fill hd screw w/lockwasher, 10 - 24 x 3/8	43	A197395-2	1	Identification plate w/screws
8	154317	2	Cable clamp	44	1293	2	Drive screws, 2 x 3/16
9	A210480-1	1	Engine cover retainer w/screws and nuts	45	326679	1	Baffle, intake
10	7011	2	Elastic stop nut	46	1732	1	Flat hd screw, 10 - 24 x 1/2
11	401366	2	Name plate "Sea King"	47	326836	1	Gasket, baffle
12	S326712	1	Engine cover w/retainers	48	183371	1	Bracket, throttle cable
13	24623-1	4	Grommet, choke and gear shift rods	49	1236	2	Hex slot hd screw, 1/4 - 20 x 1/2
14	94991	3	Grommet, remote controls	50	183527	1	Bearing cap
15	1482	2	Hex slot hd screw, w/lockwasher, 5/16 - 18 x 3/4	51	1225	2	Hex slot hd screw, 10 - 24 x 5/8
16	401711	1	Engine cover plate	52	1340	2	Hex nut, 10 - 32
17	8539	1	Spring pin	53	8058	5	Int tooth lockwasher
18	8064	2	Spring lockwasher	54	98273	1	Rod end connector stud
19	401512	1	Plate, insert front	55	183525-3	1	Lever, magneto control
20	288621	1	Gear shift lever arm	56	A183263	1	Connector, magneto control
21	A288614-1	1	Gear shift rod w/knob	58	190445-2	1	Magneto control link
22	272503	1	Choke rod	59	288838-1	1	Magneto control shaft
23	197507	1	Knob, choke	60	183504	1	Grommet magneto control shaft
24	51332	1	Plug starter rope handle	61	8058	1	Int tooth lockwasher
25	8012	1	Plain washer	62	1340	1	Hex nut, 10 - 32
26	51132-1	1	Starter rope handle	63	1156	1	Flat hd screw, 1/4 - 20 x 1/2
27	A183763-1	1	Cover latch handle w/shaft	64	40674-4	1	Starter pinion gear
28	272888-1	1	Control panel plate	65	901424-1	1	Starter pinion spring
29	228181	1	Engine control panel	66	901739	1	Starter rewind spring drive
30	303300	1	Spring	67	40425	1	Starter pinion pin
31	183623	1	Grommet, starter rope	68	901710	1	Starter rewind spring guide post
32	8035	1	Plain washer	69	901970	1	Starter rewind spray
33	73741	1	Retaining ring	70	901737	1	Starter rewind spring retainer
34	94991	1	Grommet	71	183239-2	1	Starter spool
35	326038	1	Support plate	72	24333	1	Starter rope end
36	183324-2	1	Packing	73	A901232	1	Starter rope w/end
				74	183971	1	Starter retainer extension
				75	183445	1	Starter rope guide
					272397-1	1	Decal "shift" (not shown)

ENGINE COVER, SUPPORT PLATE AND STARTER



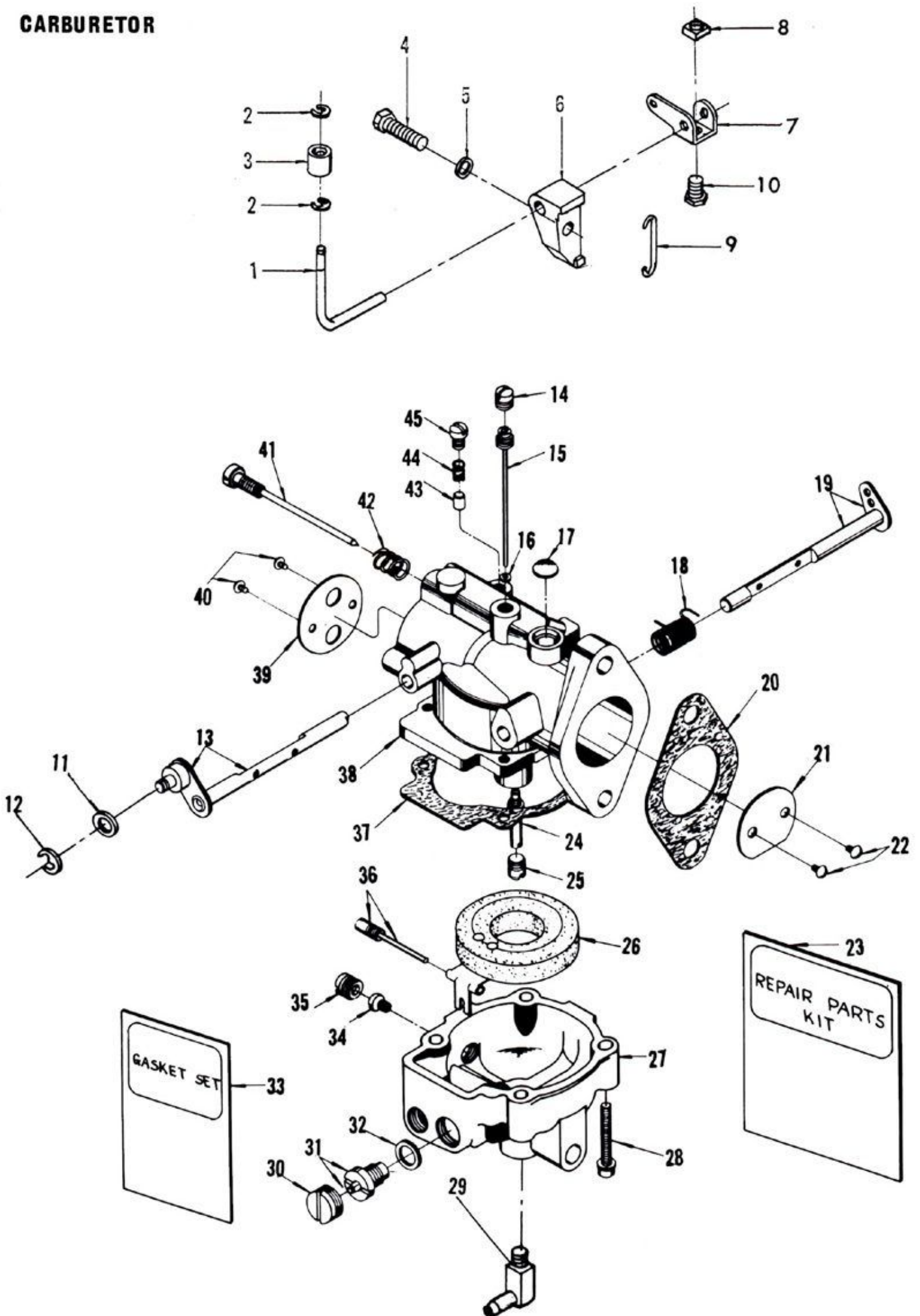
Carburetor

ILLUS. NO.	PART NO.	QTY.	DESCRIPTION
1	78316	1	Throttle cam follower
2	78410	2	Retaining ring
3	78318	1	Throttle cam follower roller
4	1228	1	Hex slot hd screw, 10 - 24 x 13/16
5	8012	1	Plain washer
6	78807	1	Throttle cam follower retainer
7	78190	1	Throttle cam follower arm
8	1365	1	Square nut, 10 - 24
9	901193	1	Throttle link
10	1558	1	Hex slot hd screw, 10 - 24 x 3/8
11	8011	1	Plain washer
12	90807	1	Retainer, choke rod
13	014590	1	Choke shaft and lever
14	* 02395	1	Idle tube channel plug screw
15	* 010154	1	Idle tube
16	06569	1	Idle tube gasket
17	* 02531	1	Body channel welch plug
18	* 08647	1	Throttle shaft return spring
19	011942	1	Throttle shaft and lever
20	24906	1	Carburetor gasket
21	014587	1	Throttle shutter
22	* 05204	2	Throttle shutter screw
23	RK-750	1	Repair parts kit, includes all items marked with an asterisk (*).
24	* 011946	1	Main nozzle
25	* 01102	1	Main nozzle channel plug screw
26	011294	1	Float
27	011665	1	Fuel bowl
28	06062	4	Body retaining screw and lockwasher
29	40314-1	1	Fuel line elbow
30	07896	1	Fuel bowl plug screw (large)
31	* 013443	1	Inlet needle, seat and gasket
32	02510	1	Inlet seat, gasket
33	* GS-194	1	Gasket and packing set
34	* 012515	1	Main fuel jet (.069) standard
35	* 01102	1	Fuel bowl plug screw (small)
36	* 011859	1	Float lever pinion screw
37	07903	1	Body gasket
38		1	Body (order carburetor complete)
39	014614	1	Choke shutter
40	010280	2	Choke shutter screw and lockwasher
41	* 012999	1	Idle adjustment screw
42	* 012988	1	Idle adjustment screw spring
43	* 07923	1	Choke friction pin
44	* 07925	1	Choke friction pin spring
45	* 07912	1	Choke friction pin screw
	295061-1	1	Carburetor complete, MD-142 A

OPTIONAL SIZE MAIN FUEL JETS
(Use Only At Altitudes Indicated)

	<u>Sea level - 5000 Ft.</u>	<u>5000 Ft.-----</u>
Jet Size	.069	.067
Part No.	012515	011397

CARBURETOR



Magneto

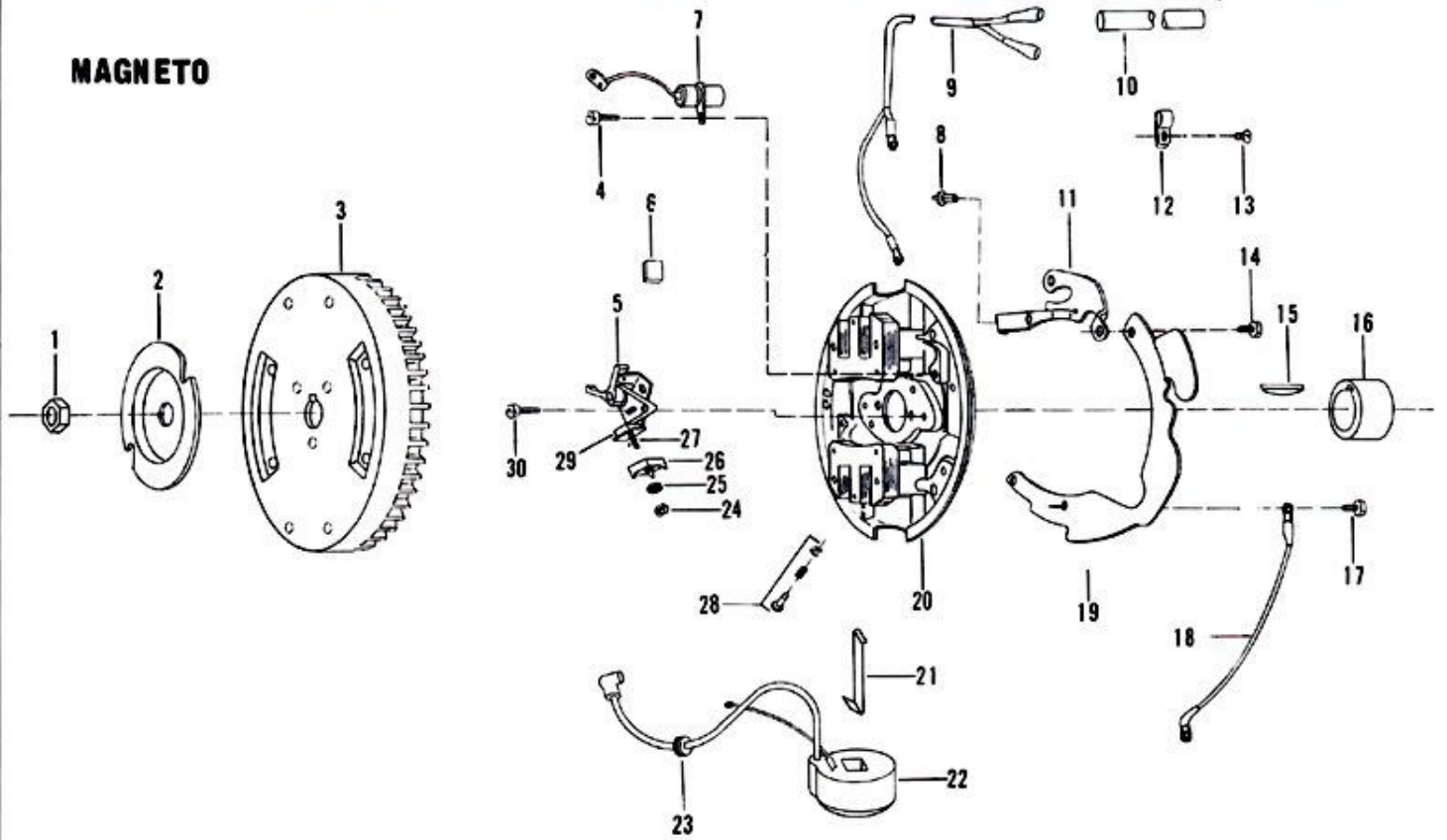
ILLUS. NO.	PART NO.	QTY.	DESCRIPTION	ILLUS. NO.	PART NO.	QTY.	DESCRIPTION
1	1342	1	Flywheel nut, 1/2 - 20	20	A217095-2	1	Stator plate complete w/coil, condensers, breaker points and screws
2	901456-1	1	Starter collar	21	12146	2	Coil wedge spring
3	217097	1	Flywheel and starter gear	22	12226	2	Coil w/lead wire
4	12083	2	Condenser clamp screw	23	12088	4	Lead wire grommet
5	12153	2	Breaker contact set	24	12127	2	Contact stud nut
6	12228	2	Cam wiper felt	25	8055	2	Lockwasher
7	12181-1	2	Condenser	26	12128	1	Connection stud insulator (outside)
8	1727	1	Bumper	27	12142	1	Connection stud
9	12186	1	Ground lead	28	12234	1	Stop button unit
10	94914	1	Sleeve	29	12129	1	Connection stud insulator (inside)
11	78317-2	1	Magneto lead wire clip	30	12170	4	Breaker contact clamp screw
12	78446	1	Clamp			1	Magneto complete, order component parts
13	1306	1	Rd hd screw, 10 - 24 x 3/8		12091	1	Lead wire marker, top (not shown)
14	1227	4	Hex slot hd screw, 10 - 24 x 1/2		K-750	2	Sparkie kit (not shown)
15	54498	1	Magneto key				
16	217002	1	Breaker cam-				
17	1090	4	Fill hd screw w/lockwasher, 10 - 24 x 9/16				
18	289664	1	Lead wire ground				
19	295192-1	1	Throttle cam plate				

Crankshaft and Piston Group

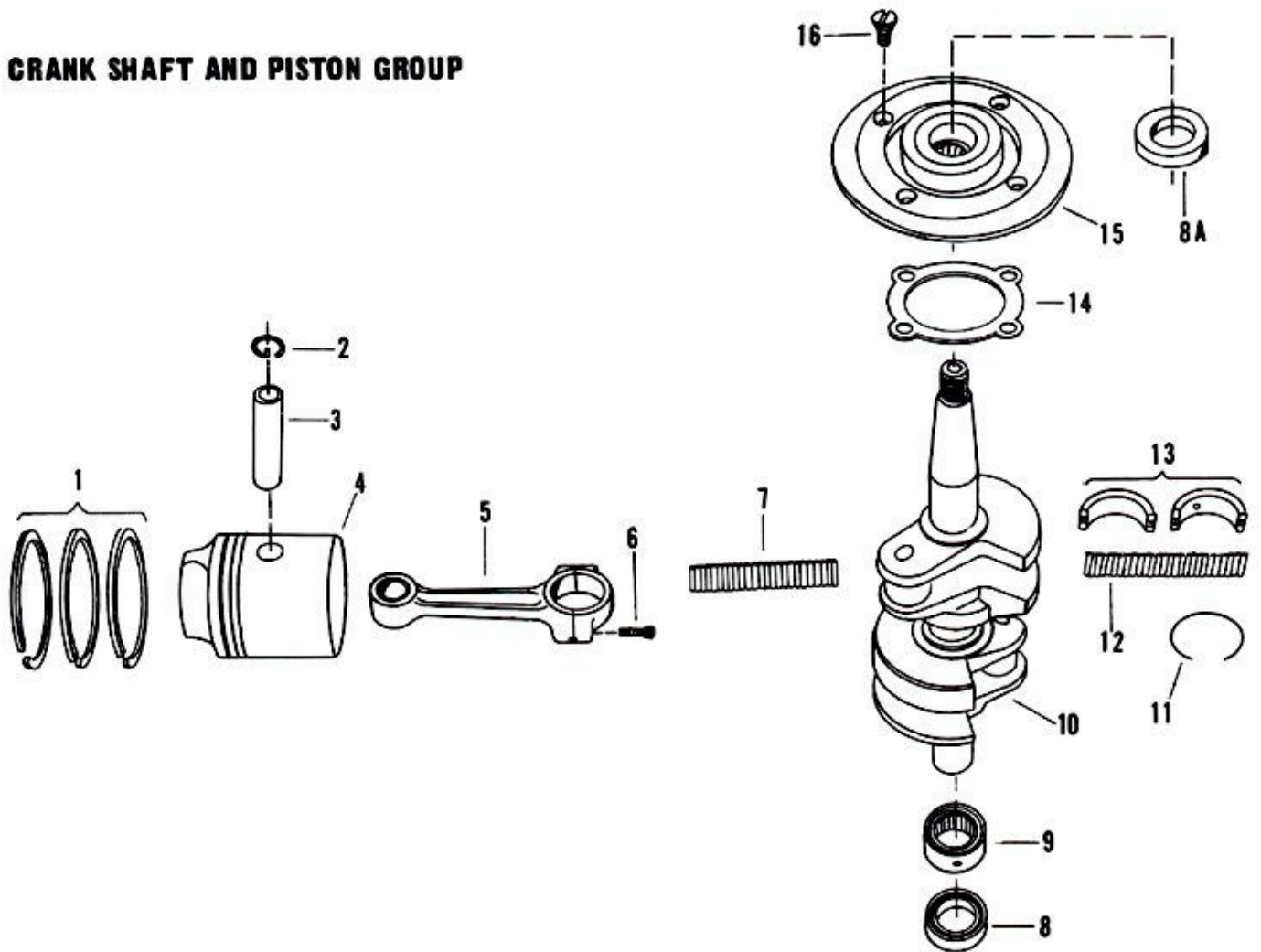
ILLUS. NO.	PART NO.	QTY.	DESCRIPTION	ILLUS. NO.	PART	QTY.	DESCRIPTION
1	* A77260	1	Piston ring set (6 per set)	11	* 901410	1	Snap ring, center main bearing
2	* 901096-1	4	Lock ring, piston pin	12	* A76155	1	Needle set, center main bearing (34 per set)
3	* 901017	2	Piston pin	13	* A901655	1	Center main bearing race w/snap ring
4	* 190015	2	Piston	14	324277	1	Gasket, bearing cage
5	* 2A77016-1	2	Connecting rod w/screws and bearing	15	A346144	1	Crankshaft bearing cage w/seal and bearing
6	* 901634	4	Connecting rod screw	16	1831	4	Flat hd screw, 1/4 - 20 x 5/8
7	* 324571	2	Connecting rod needle set (30 per set)				
8	* 901146-1	1	Seal, crankshaft lower				
8A	* 346146	1	Seal, crankshaft upper				
9	* 901014	1	Bearing, crankshaft lower main				
10	* 77018-3	1	Crankshaft				

* Indicates Contents Of Cylinder Complete. Also Refer To Power Head Page.

MAGNETO



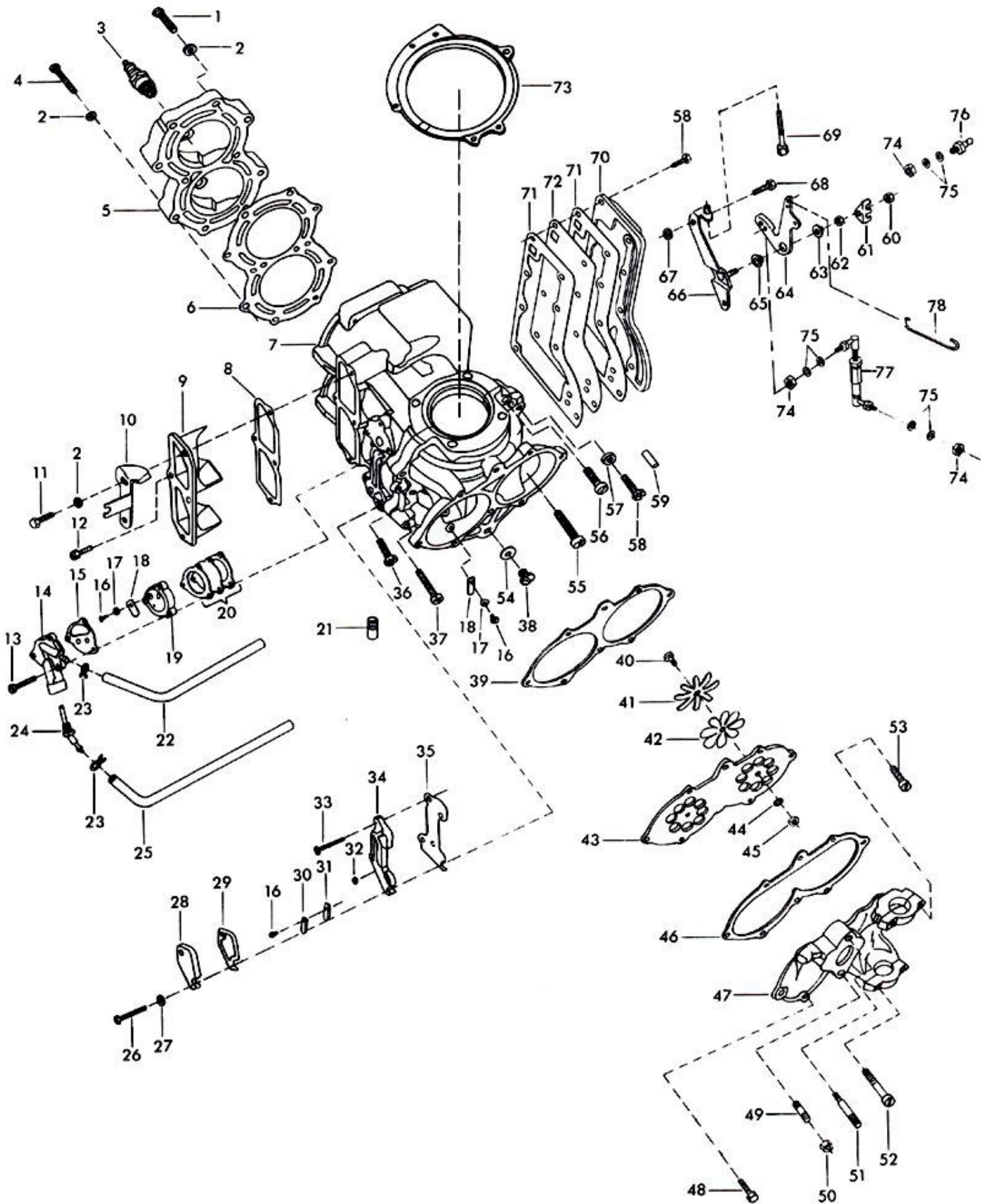
CRANK SHAFT AND PISTON GROUP



Power Head, Reed Plate and Fuel Pump

ILLUS. NO.	PART NO.	QTY.	DESCRIPTION	ILLUS. NO.	PART NO.	QTY.	DESCRIPTION
1	901938-1	2	Screw, cylinder head	45	1339	2	Hex nut, 10 - 24
2	8025	12	Plain washer	46	901168-1	1	Gasket, adapter flange
3	174227	2	Spark plug, L-4-J	47	2A272167	1	Carburetor adapter flange w/ bearing caps, screws
4	77936	8	Screw, cylinder head	48	1240	6	Hex slot hd screw, 3/8 Acr. flats, 1/4 - 20 x 7/8
5	295518	1	Cylinder head	49	24209	1	Stud, carburetor - lower
6	78529-1	1	Gasket, cylinder head	50	1516	2	Hex nut, 5/16 - 18
7	* A190010-1	1	Cylinder w/crankcase cover, dowel pins and screws	51	78209-2	1	Stud, carburetor - upper
8	901223-1	1	Gasket, transfer port cover	52	1104	1	Fill hd screw, 1/4 - 20 x 2 - 1/2
9	77222	1	Cover, transfer port	53	1111	3	Fill hd screw, 1/4 - 20 x 7/8
10	228112-1	1	Cam, idle stop switch	54	8077	1	Nyltite washer
11	1238	2	Hex slot hd screw, 1/4 - 20 x 3/4	55	1128	2	Fill hd screw, 5/16 - 18 x 1 - 3/8
12	1481	2	Hex slot hd screw, 7/16 Acr. flats, 1/4 - 20 x 9/16	56	1488	2	Fill hd cap screw, 5/16 - 18 x 7/8
13	1069	3	Fill hd screw, 10 - 24 x 1 - 1/16	57	8026	1	Plain washer
14	901746	1	Cover, fuel pump	58	* 1240	8	Hex slot hd screw, 3/8 Acr. flats, 1/4 - 20 x 7/8
15	24748	1	Gasket, fuel pump	59	8559	2	Dowel pin
16	1286	4	Pan hd screw, 4 - 40 x 3/16	60	1490	1	Hex nut, 1/4 - 20
17	8003	3	Plain washer	61	901834	1	Clip, lead wire
18	18160-1	3	Reed	62	7019	1	Hex nut, 1/4 - 20
19	A24757-3	1	Reed plate w/reeds, washers, and screws	63	183282	1	Washer, pivot pin
20	2A24747-1	1	Fuel pump diaphragm w/gaskets	64	183525-3	1	Lever, magneto control
21	215247-2	1	Tube, water outlet	65	183813	1	Bearing, magneto control lever
22	A81254	1	Fuel line w/clamps, pump to carburetor	66	A228439-1	1	Bracket, magneto control
23	2706772	4	Clamp, fuel line	67	92932	2	Spacer
24	78314	1	Elbow, fuel pump inlet w/filter	68	1223	2	Hex slot hd screw, 3/8 Acr. flats, 1/4 - 20 x 1 - 1/8
25	A90753	1	Fuel line w/clamps, pump to bushing	69	215690	1	Screw, throttle stop
26	1228	2	Hex slot hd screw, 10 - 24 x 3/16	70	901152-3	1	Cover, exhaust port
27	8072	1	Plain washer	71	901154	2	Gasket, exhaust port plate
28	78471	1	Cover, cylinder drain	72	901151	1	Plate, exhaust port
29	78472	1	Gasket, cylinder drain cover	73	73082	1	Magneto stator ring
30	78920	1	Stop, reed	74	1340	3	Hex nut, 10 - 32
31	901957	1	Reed	75	8058	6	Internal tooth lockwasher
32	78811	2	Screen, cylinder drain	76	98273	1	Stud, rod end connector
33	1227	2	Hex slot hd screw, 10 - 24 x 1/2	77	A183263	1	Connector, magneto control
34	A78757-1	1	Reed plate, cylinder drain w/reed, stop, screen, screws	78	190445-2	1	Link, magneto control
35	78748-1	1	Gasket, cylinder drain reed plate		G-204	1	Gasket set (not shown)
36	1201	2	Hex slot hd screw, 1/4 - 20 x 3/4			1	Engine touch-up paint, spray bomb
37	* 1581	6	Hex slot hd screw, 7/16 Acr. flats, 1/4 - 20 x 1 - 1/4			1	Metallic Gold
38	50109	1	Plug, crankcase cover			1	Engine touch-up paint, spray bomb
39	901159-1	1	Gasket, reed plate			1	Satin Frost White
40	901197-1	2	Screw, reed			1	Cylinder complete, includes all items marked with an asterisk (*). Also refer to crankshaft page.
41	901161-1	2	Stop, reed				
42	901160-1	2	Reed				
43	A901158-1	1	Reed plate w/reeds, stops screws				
44	8058	2	Int tooth lockwasher				

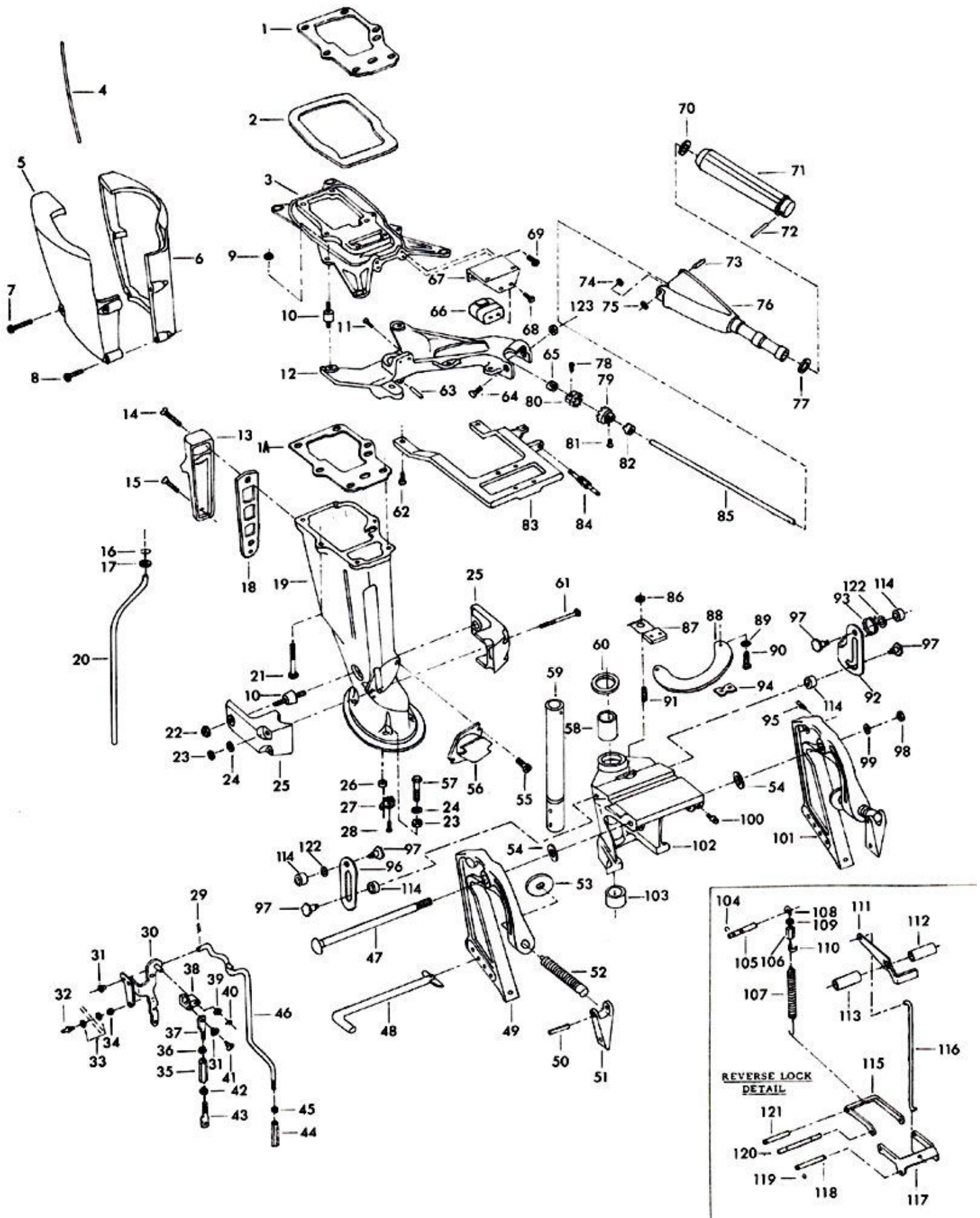
POWER HEAD, REED PLATE AND FUEL PUMP



Motor Leg

ILLUS. NO.	PART NO.	QTY.	DESCRIPTION	ILLUS. NO.	PART NO.	QTY.	DESCRIPTION
1	183279	1	Gasket, cylinder exhaust	62	1745	3	Hex slot hd screw w/lockwasher, 5/16 - 18 x 1
1A	385453	1	Gasket, leg exhaust				
2	183756	1	Packing, support plate	63	1663	1	Spring pin, S.S. 5/16 x 1 3/4
3	183963-3	1	Spacer plate	64	295080	1	Pivot bolt
4	190321	3	Packing, leg cover	65	288689	1	Bearing magneto control shaft
5	190145-1	1	Leg cover, starboard	66	A40965-1	1	Shock mount upper thrust
6	190135-1	1	Leg cover, port	67	40596	1	Bracket, shock mount upper thrust
7	1504	3	Fill hd screw, 1/4 - 20 x 1 1/4	68	1211	2	Hex hd screw w/lockwasher, 1/4 - 20 x 5/8
8	1583	2	Fill hd screw, 1/4 - 20 x 1 5/8				
9	1516	6	Hex nut, S.S., 5/16 - 18	69	1502	4	Hex slot hd screw, 1/4 - 20 x 5/8
10	A215962	8	Shock mount w/spacer	70	215795	1	Steering handle grip dampener
11	1160	2	Flat hd screw, 1/4 - 20 x 5/8	71	A295137	1	Steering handle grip w/collar, shaft and indicator
12	A295940-1	1	King pin mounting plate				
13	190832-2	1	Motor leg exhaust cover	72	8542	1	Spring pin, S.S.
14	1148	1	Flat hd screw, S.S., 1/4 - 20 x 1 1/2	73	1664	1	Spring pin, S.S.
15	1150	1	Flat hd screw, S.S., 1/4 - 20 x 1 1/8	74	295457	1	Washer
16	24342	1	Seal, water line upper	75	295175	1	Washer (nylon)
17	8039	1	Plain washer	76	288079-1	1	Steering handle
18	190833	1	Gasket, motor leg exhaust cover	77	53795-1	1	Steering handle grip dampener
19	324133	1	Motor leg	78	1642	1	Socket hd cap screw, S.S., 10 - 24 x 3/4
20	142244	1	Inlet water line	79	295815	1	Gear, steering handle
21	1887	6	Hex slot hd screw, 1/4 - 20 x 3 1/8	80	288691	1	Gear
22	1326	2	Acorn nut, S.S., 5/16 - 18	81	1614	1	Headless socket hd set screw, 1/4 - 20 x 1/4
23	1515	6	Hex nut, S.S., 5/16 - 18				
24	8096	6	Lockwasher, S.S.	82	295689	1	Bearing
25	190707-3	2	Shock mount lower cover	83	183647-1	1	Carrying handle
26	50618	1	Seal shift rod upper	84	197767-1	1	Fuel line bushing
27	50671-1	1	Retainer shift rod seal	85		1	Steering handle shaft order A288688
28	1064	1	Fill hd screw, S.S., 8 - 32 x 3/8	86	7008	1	Hex lock nut, 1/4 - 20
29	1029	3	Int hair pin cotter IHP - 144	87	A901742	1	Friction shoe adjusting arm w/shoe
30	A288612	1	Gear shift bracket w/lever arm and stud	88	901775	1	Friction shoe plate
31	183818	3	Bearing	89	8062	2	Lockwasher
32	98273	1	Rod end connector stud	90	1689	2	Hex slot hd screw, 1/4 - 20 x 1/2
33	8058	2	Int tooth lockwasher	91	901822	1	Swivel bracket stud
34	1340	1	Hex nut, 10 - 32	92	385541	1	Tilt lock
35	901704	1	Coupling, shift interlock	93	286544	1	Spring tilt lock
36	1718	1	Hex nut, 1/4 - 20 L.H.	94	901631-1	1	Friction shoe
37	288531	1	Connector, L.H.	95	55274	3	Grease fitting
38	288977	1	Lever, shift interlock	96	385433	1	Tilt stop
39	8025	1	Plain washer	97	286422	4	Pivot, tilt lock
40	288807	1	Retaining ring, shift interlock	98	7001	1	Elastic stop nut
41	288751	1	Shoulder screw	99	1656	1	Plain washer
42	1341	1	Hex nut, 1/4 - 20 R.H.	100	55274	1	Grease fitting
43	288685	1	Connector, R.H.	101	A385532	1	Stern bracket port w/clamp screw
44	901704	1	Coupling, gear shift rod	102	A145072-4	1	Swivel bracket w/bearings
45	1341	1	Hex nut, 1/4 - 20	103	183990	1	Spacer, king pin
46	324615	1	Gear shift rod upper	104	73741-1	2	Retaining ring
47	145037-1	1	Stern bracket pivot bolt	105	78467	1	Pin reverse tilt adjusting hook
48	A324113	1	Stern bracket lock bar w/end	106	78273	1	Coupling, reverse tilt adjusting
49	A385032	1	Stern bracket starboard w/clamp screw	107	78544	1	Spring, reverse tilt lock
50	1638	2	Spring pin	108	78413	1	Reverse tilt adjusting hook, top
51	53075-1	2	Clamp screw handle	109	1647	1	Hex nut, S.S., 8 - 32
52	A324073-1	2	Clamp screw w/foot and handle	110	78412	1	Reverse tilt adjusting hook, bottom
53		2	Clamp screw foot, order A324073-1	111	272587	1	Reverse tilt release lever
54	901286-1	2	Friction washer, swivel bracket	112	78670	1	Spacer, reverse tilt lever port
55	1129	4	Fill hd screw, S.S., 5/16 - 18 x 1/2	113	78677	1	Spacer, reverse tilt lever starboard
56	183346	1	Shock mount lower thrust	114	286451	4	Spacer
57	1501	4	Hex hd cap screw, S.S., 5/16 - 18 x 1 9/16	115	78464	1	Reverse tilt lock
				116	78586-1	1	Reverse tilt release rod
58	901169-1	2	Bearing, swivel bracket	117	78463	1	Reverse tilt lock bracket
59	228019	1	King pin	118	78422	1	Pin, reverse tilt lock retainer
60	901011	1	Washer, swivel bracket	119	78410	6	Retaining ring
61	1491	2	Hex bolt, S.S., 5/16 - 18 x 3/4	120	78886	1	Pin, reverse tilt lock bracket (long)
				121	78466	1	Pin, reverse tilt control spring (short)
				122	1666	2	Bowed washer
				123	1832	1	Stop nut
					215894-1	1	Indicator steering handle

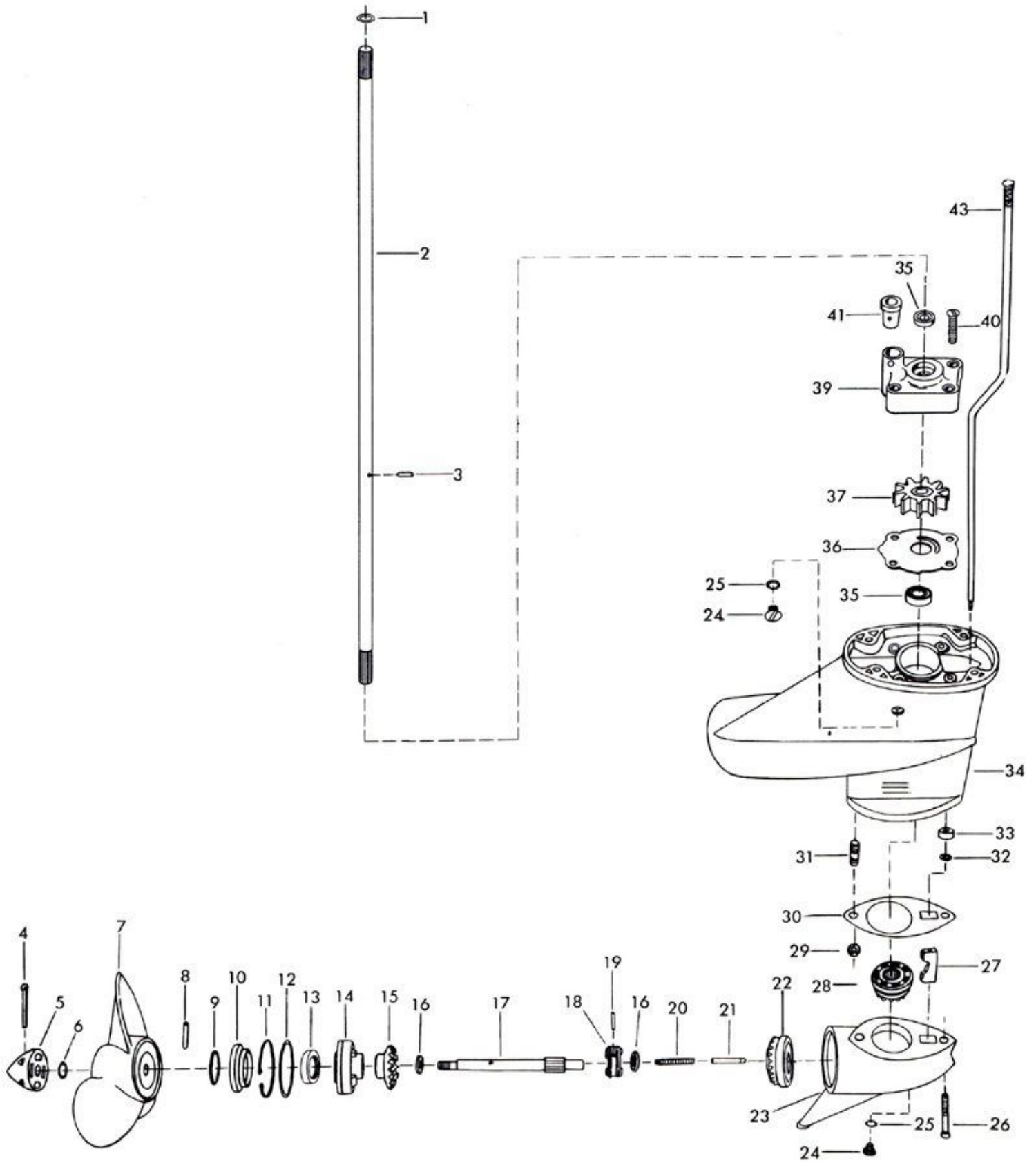
MOTOR LEG



Gear Housing

ILLUS. NO.	PART NO.	QTY.	DESCRIPTION
1	24342	1	Seal, drive shaft
2	183128-1	1	Drive shaft
3	901563	1	Drive pin, water pump impeller
4	1024	1	Cotter pin, S. S. , 7/16 x 1 1/4
5	A324094	1	Nut, propeller shaft w/cotter pin
6	24342	1	Seal, propeller nut
7	2A77265-2	1	Propeller
8	A324101	1	Shear pin pack of 6 w/cotter pin
9	53983	1	Retaining ring, weed guard
10	54262	1	Weed guard
11	* 50411	1	Retaining ring, propeller shaft bearing cage
12	* 74305	1	Seal, propeller shaft bearing cage
13	* 346118	1	Seal, propeller shaft
14	* 2A77298	1	Propeller shaft bearing cage w/bearing and seals
15	* A901023	1	Bevel gear rear w/bearing
16	* 901717	2	Thrust washer, bevel gear
17	* 324098-1	1	Propeller shaft
18	* 901521	1	Clutch
19	* 8555	1	Spring pin
20	* 901719-2	1	Clutch spring
21	* 901728	1	Clutch shift pin
22	* 2A901023-3	1	Bevel gear front w/bearing
23	* A78054-2	1	Gear housing lower w/plug and washer
24	* 50109	2	Plug, gear housing
25	* 8077	2	Washer, gear housing plug
26	* 1888	1	Hex socket hd cap screw, S. S. , 5/16 - 18 x 2 5/16
27	* 901721	1	Clutch shift cam
28	* A78266	1	Bevel pinion w/bearing
29	1516	1	Hex nut, 5/16 - 18
30	78555	1	Gasket, gear housing
31	901008	1	Stud, gear housing
32	* 50671-1	1	Retainer, shift rod seal, lower
33	* 338618	1	Seal, shift rod lower
34	A190554-1	1	Gear housing upper w/drive shaft seal, plug and washer
35	901307-2	2	Seal
36	341562	1	Back plate, water pump
37	901065-1	1	Impeller, water pump
39	A343060	1	Water pump body w/driveshaft seal
40	1150	4	Flat hd screw, S. S. , 1/4 - 20 x 1 1/8
41	55914	1	Seal, water line lower
43	901705-2	1	Gear shift rod lower for standard shaft models
	C78054	1	Gear housing lower complete, includes all items marked with an asterisk (*).

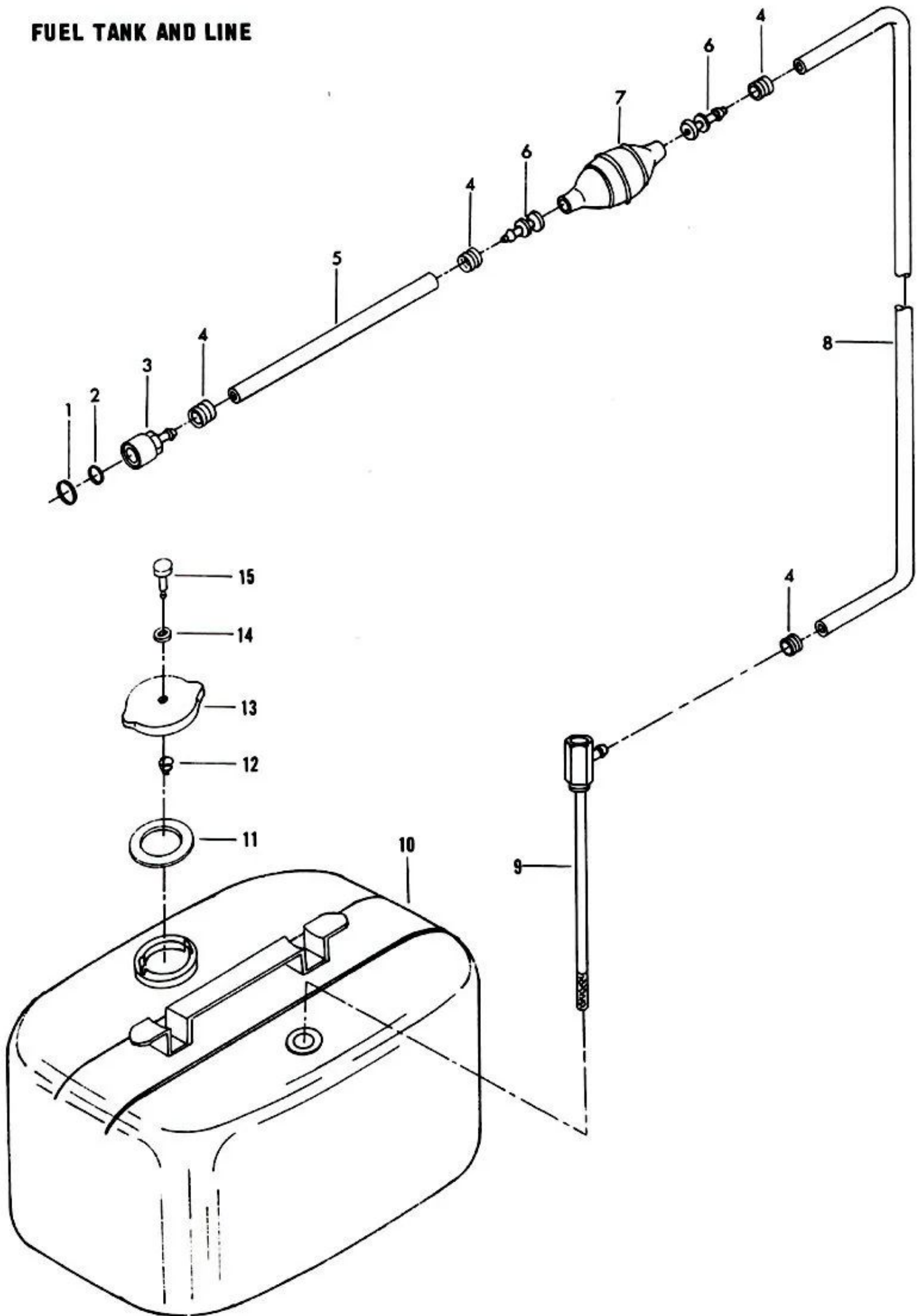
GEAR HOUSING



Fuel Tank and Line

ILLUS. NO.	PART NO.	QTY.	DESCRIPTION
1	213342	1	Seal, fuel line coupler (large)
2	213735	1	Seal, fuel line coupler (small)
3	197787-2	1	Coupler, fuel line
4	298788	4	Ferrule
5	A84754-1	1	Fuel line w/clamps
6	298769-1	2	Adapter
7	A298766-1	1	Prime bulb
8	A197752-1	1	Fuel line (long) w/clamps
9	327755	1	Adapter, fuel tank
10	327034	1	Fuel tank
11	76252	1	Gasket, filler cap
12	76389	1	Spring, vent screw
13	A76251-1	1	Filler cap w/vent screw
14	76257	1	Gasket, vent screw
15	76256	1	Vent screw
	224394-3	1	Decal, fuel mixture (not shown)
	A178752	1	Fuel supply line w/coupler

FUEL TANK AND LINE



Specifications

HORSEPOWER -- 20 O.B.C. Certified Brake H.P. at 5000 R.P.M.

ENGINE -- Two-Cycle, Twin Cylinder, Alternate Firing.

BORE AND STROKE -- 2-7/16" Bore x 2.14" Stroke.

DISPLACEMENT -- 19.96 Cubic Inches.

CONNECTING RODS -- Forged Nickel Steel, Uncased Needle Bearings at Crankshaft, Cased Needle Bearings at Piston Pin.

CRANKSHAFT -- Forged Nickel Steel, Cased Roller Bearings at Upper and Lower Mains, Uncased Needle Bearings at Center Main with Bronze Thrust Bearings.

PROPELLER SHAFT AND DRIVE SHAFT -- Stainless Steel, Hardened, Ground and Polished.

COOLING -- Water Cooled - Positive Displacement Type Water Pump.

FUEL TANK -- Separate Steel Tank, Capacity - 4 - 1/4 U. S. Gallons, 3 - 1/2 Imperial Gallons

FUEL SYSTEM -- Float Feed Carburetor, Fixed High Speed Jet, Adjustable Low Speed Jet.

FUEL FILTERS -- Filter Screens in Fuel Tank and Fuel Pump.

TRANSOM HEIGHT -- 15" for Standard Shaft Models 20" with Long Shaft Kit.

WEIGHT -- 74 Lbs. For Standard Shaft Model.

TILT LOCK -- Positive Tilt Lock Permits Engine to Remain in Tilted Position When Not in Use.

RECOMMENDED OPERATING RANGE -- 4500-5500 R.P.M.

Lubrication Chart

PART NAME	TYPE OF LUBRICANT	HOW OFTEN
Starter pinion gear	Riverside Two-Cycle Engine Oil	If starter operation becomes sluggish
Starter spool bearings	Riverside Two-Cycle Engine Oil	If starter operation becomes sluggish
Gear shift control rod linkage bearing	Riverside Two-Cycle Engine Oil	Twice each season, oftener if required
Throttle cam follower	Riverside Two-Cycle Engine Oil	Twice each season, oftener if required
Magneto control shaft bearing	Riverside Two-Cycle Engine Oil	Twice each season, oftener if required
Steering handle pinion gear	EP-All Purpose Chassis Lubricant	Twice each season, oftener if required
Steering handle bevel gear	EP-All Purpose Chassis Lubricant	Twice each season, oftener if required
Reverse tilt control lock	Riverside Two-Cycle Engine Oil	Twice each season, oftener if required
Clamp screws	Riverside Two-Cycle Engine Oil	Twice each season, oftener if required
Stern bracket pivot bolt	Riverside Two-Cycle Engine Oil	Twice each season, oftener if required
Gear housing	Wards Sea King Hypoid Outboard Gear Oil	Every 30 hours, oftener if required
Fuel line coupler release ring	Riverside Two-Cycle Engine Oil	Twice each season, oftener if required

Special Adjustments

BREAKER POINT GAP -- .020".

SPARK PLUG -- Champion L-4-J, Gap .030".

FLYWHEEL NUT -- Torque to 45 Foot Pounds.

CYLINDER HEAD SCREWS -- Torque to 120 Inch Pounds.

POINT OF THROTTLE OPENING -- Set the Position of the Throttle Cam Follower Roller, Illustration 3, Page 5, so that The Throttle Shutter in the Carburetor Will Be CLOSED and all Slack REMOVED from the Linkage. When the Throttle Cam Follower Roller is on the Adjusting Mark on the Throttle Cam Plate.

Form No. 60H-959B*